

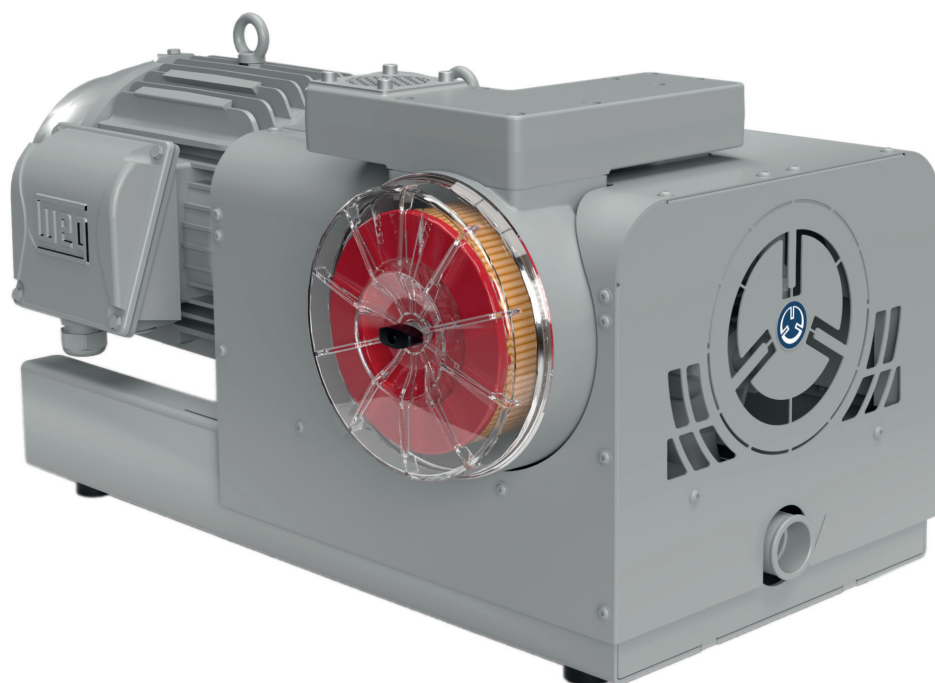
DATA SHEET

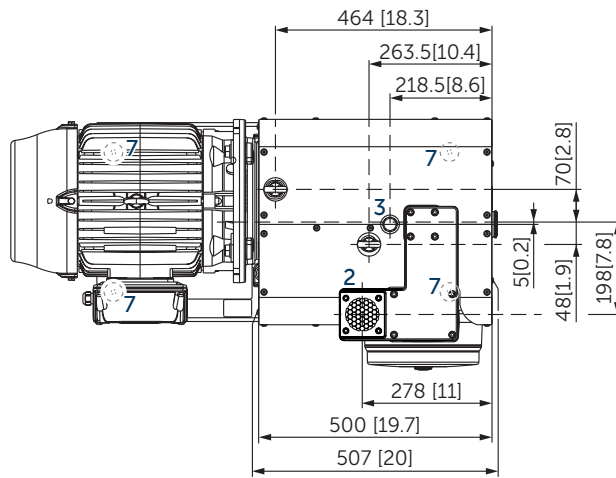
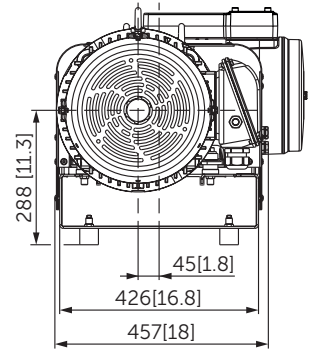
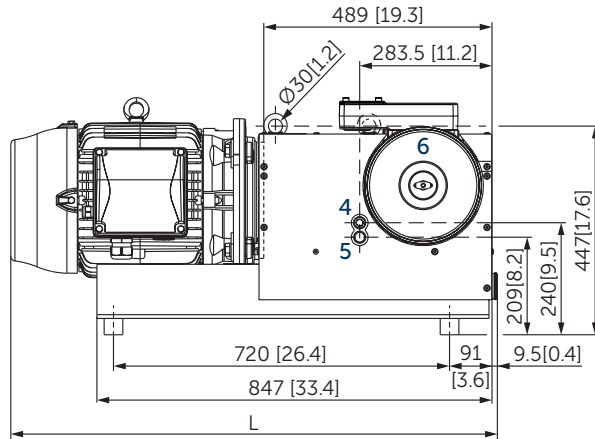
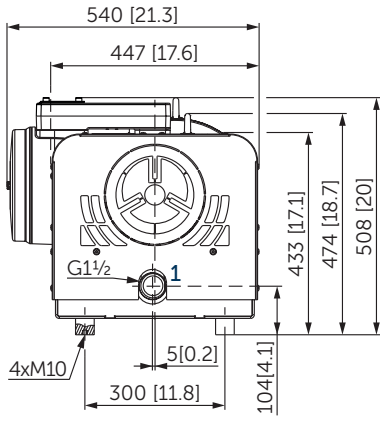
BCP 100

CLAW COMPRESSORS

dry and contact free compression
air-cooled

MAKE IT BECKER.



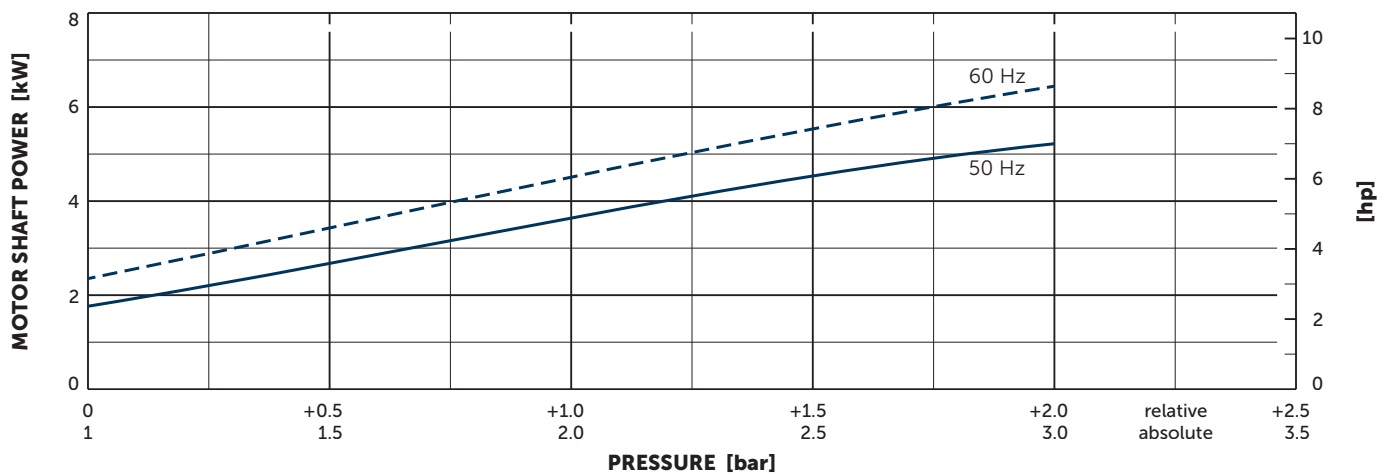
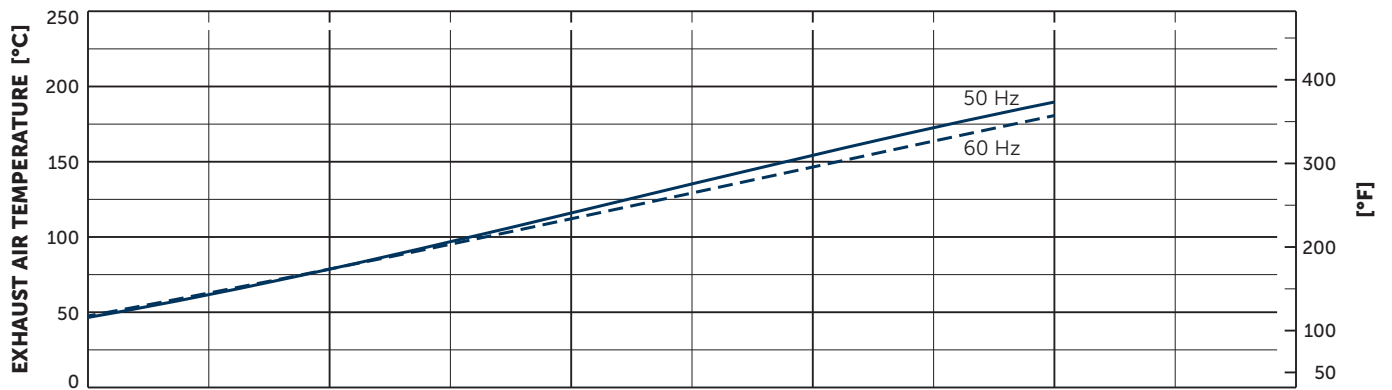
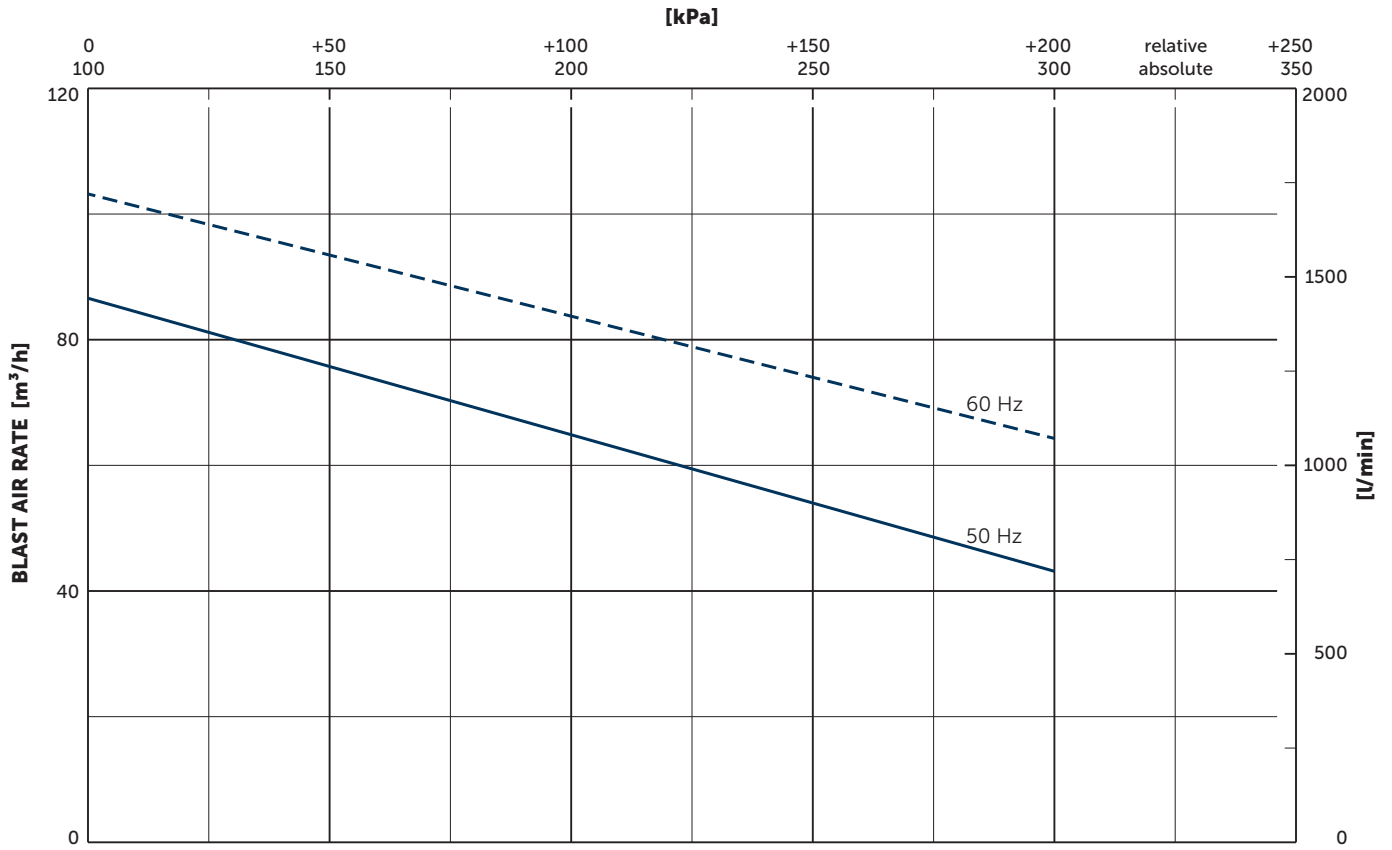


- 1 Pressure connection (G1½)
- 2 Suction side
- 3 Oil filler cap
- 4 Oil sight glas
- 5 Screw plug for oil drain
- 6 Suction filter
- 7 Rubber buffer position
- The motor illustration may vary.
- Dimensions in mm [inch]

Nominal capacity		Pressure relative motor-dependent	Emission sound pressure level ¹⁾		Weight without motor
50 Hz	60 Hz		50 Hz	60 Hz	
100	120	+0.8/+1.3/+1.5/+2.0	75 (+1 bar)	77 (+1 bar)	≈103.5

¹⁾ According to DIN EN ISO 11203, accuracy class of measurement: class 2, extended measurement uncertainty: 3 dB 1 m [39.4 inch] distance, at medium load, both connection sides piped

Pressure relative bar	3~ Motors										Length L mm [inch]					
	#	50 Hz				60 Hz				Version		Weight kg				
	kW	V	min ⁻¹	A	kW	V	min ⁻¹	A								
+0.8	01	Δ220/Y380 IE3 2900 10.3/5.95				3.0	Δ - /Y460	IE3	3520	-	/5.01	UL(E104590) CSA • CC029A IP55 • ISO F • PTC	34	805 [31.7]		
		Δ230/Y400 IE3 2910 10.0/5.77														
	Δ240/Y415 IE3 2915 9.82/5.68															
	3.6 Δ230/Y400 IE1 3453 11.6/6.69															
+1.3	04	Δ200/Y346 IE3 2935 12.3/7.10				3.6	Δ200/Y346	IE3	3500	13.2/7.63	-	UL(E104590) CSA • CC029A IP55 • ISO F • PTC	38	847 [33.4]		
		Δ220/Y380 IE3 2910 12.4/7.19														
	Δ - /Y400 IE3 3525 - /6.99															
	3.6 Δ265/Y460 IE2 3505 10.2/5.87															
+1.5	02	Δ230/Y400 IE3 2910 13.2/7.59				4.0	YY230/Y460	IE3	3520	13.5/6.75	-	UL(E104590) CSA • CC029A IP55 • ISO F • PTC	45	823 [32.4]		
		4.0 YY208/Y - 3500 14.6/ -														
	4.0 Δ290/Y500 IE3 2910 10.5/6.08				4.0	Δ332/Y575	IE3	3525	9.47/5.47	-	UL(E104590) CSA • CC029A IP55 • ISO F • PTC				44	823 [32.4]
	4.0 Δ230/Y400 IE3 2900 13.2/7.59															
4.0 Δ240/Y415 IE3 2910 13.0/7.49																
4.8 Δ230/Y400 IE1 3445 15.7/9.05																
+2.0	05	Δ220/Y380 IE3 2890 13.5/7.83				4.0	Δ - /Y460	IE3	3510	-	/6.67	UL(E104590) CSA • CC029A IP55 • ISO F • PTC	44	823 [32.4]		
		Δ230/Y400 IE3 2900 13.2/7.59														
	Δ240/Y415 IE3 2910 13.0/7.49															
	4.8 Δ265/Y460 IE3 3495 13.4/7.74															
+2.0	08	Δ200/Y346 IE3 2935 17.0/9.84				4.8	Δ220/Y380	IE3	3520	17.2/9.94	-	UL(E104590) CSA • CC029A IP55 • ISO F • PTC	47	823 [32.4]		
		Δ - /Y400 IE3 3530 - /9.92														
	4.8 Δ200/Y346 IE3 2935 17.0/9.84				4.8	Δ220/Y380	IE3	3520	17.2/9.94	-	UL(E104590) CSA • CC029A IP55 • ISO F • PTC				67	896 [35.3]
	4.8 Δ230/Y400 IE3 2935 18.0/10.4															
4.8 Δ220/Y380 IE3 3520 17.2/9.94																
4.8 Δ - /Y400 IE3 3530 - /9.92																
+2.0	06	Δ230/Y400 IE3 2935 18.0/10.3				5.5	YY230/Y460	IE3	3545	18.4/9.18	-	UL(E104590) CSA • CC029A IP55 • ISO F • PTC	67	896 [35.3]		
		5.5 YY208/Y - 3530 19.6/ -														
	5.5 Δ290/Y500 IE3 2935 14.2/8.26				5.5	Δ332/Y575	IE3	3545	12.7/7.35	-	UL(E104590) CSA • CC029A IP55 • ISO F • PTC				66	896 [35.3]
	5.5 Δ460/Y - IE3 3550 9.29/ -															
5.5 Δ415/Y - IE3 2945 10.6/ -																
6.6 Δ400/Y690 IE1 3495 12.7/7.34																
+2.0	09	Δ380/Y660 IE3 2935 10.8/6.22				5.5	Δ400/Y690	IE1	3495	12.7/7.34	-	UL(E104590) CSA • CC029A IP55 • ISO F • PTC	66	896 [35.3]		
		Δ460/Y - IE1 3530 10.8/ -														
	6.6 Δ460/Y - IE1 3530 10.8/ -															
	6.6 Δ200/Y346 IE3 2955 22.2/12.9															
+2.0	12	Δ200/Y346 IE3 2955 22.2/12.9				6.6	Δ220/Y380	IE3	3545	22.6/13.1	-	UL(E104590) CSA • CC029A IP55 • ISO F • PTC	74	896 [35.3]		
		Δ - /Y400 IE3 3550 - /12.7														
	6.6 Δ200/Y346 IE3 2955 22.2/12.9				6.6	Δ220/Y380	IE3	3545	22.6/13.1	-	UL(E104590) CSA • CC029A IP55 • ISO F • PTC				71	896 [35.3]
	6.6 Δ220/Y380 IE3 3545 22.6/13.1															
6.6 Δ - /Y400 IE3 3550 - /12.7																
6.6 Δ200/Y346 IE3 2955 22.2/12.9																
+2.0	10	Δ230/Y400 IE3 2930 24.5/14.1				7.5	YY230/Y460	IE3	3540	24.8/12.4	-	UL(E104590) CSA • CC029A IP55 • ISO F • PTC	71	896 [35.3]		
		7.5 YY208/Y - 3525 26.2/ -														
	7.5 Δ290/Y500 IE3 2930 19.5/11.3				7.5	Δ332/Y575	IE3	3540	17.2/9.94	-	UL(E104590) CSA • CC029A IP55 • ISO F • PTC				72	896 [35.3]
	7.5 Δ332/Y575 IE3 3540 17.2/9.94															



Reference data (atmosphere): 1000 mbar (100 kPa), 20°C (68°F), measurements with integrated filter
 Tolerance: ±10%



MAKE IT BECKER.